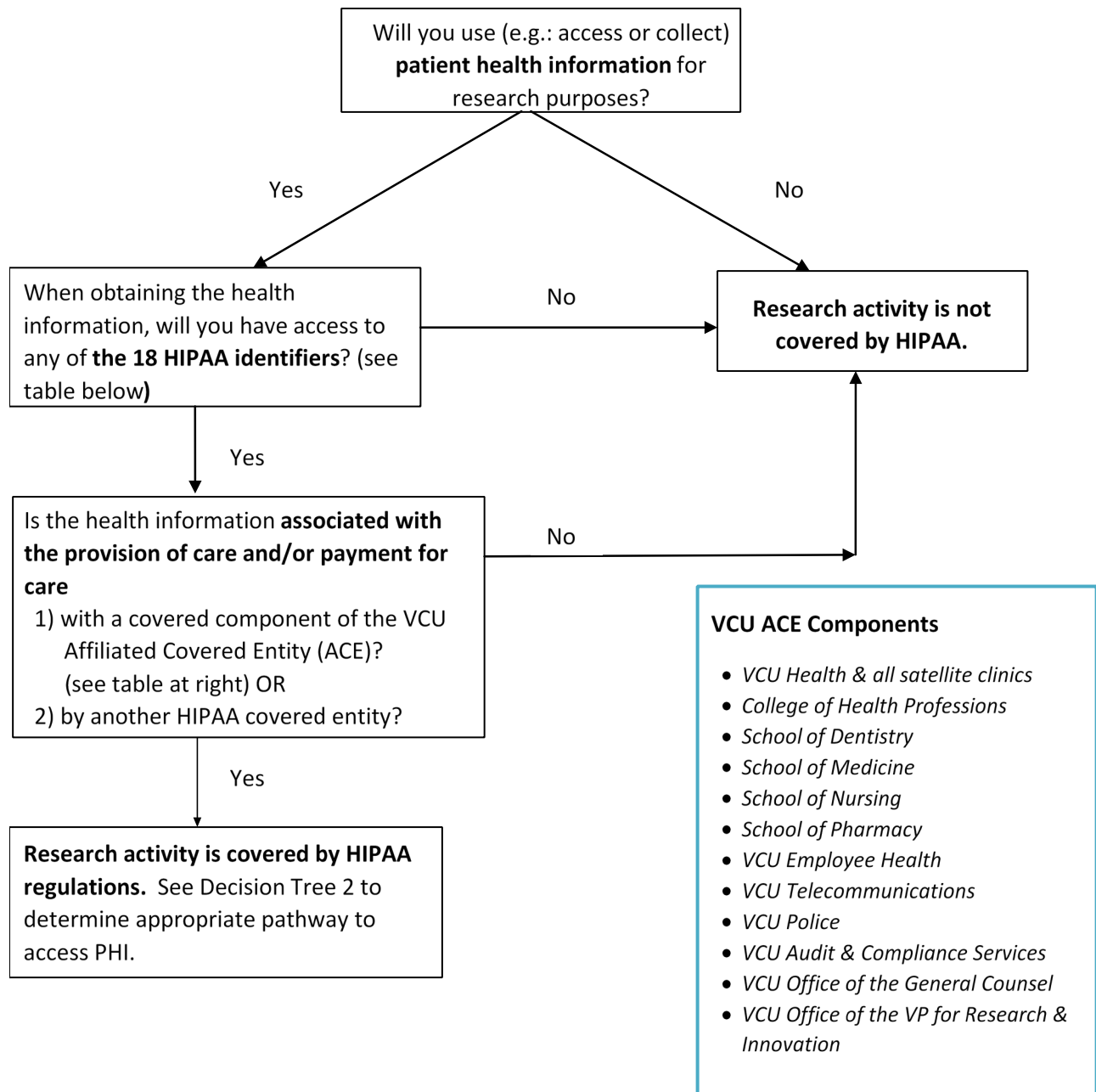


DECISION TREE 1: DETERMINING WHEN HIPAA APPLIES TO RESEARCH

This decision tree should be used to determine if research activities must comply with HIPAA regulations.



HIPAA Identifiers			
Names	Social Security Numbers	Device Identifiers	Biometric Identifiers
Dates	Email Addresses	License/Certificate #s	Photos & Like Images
Postal Addresses	Medical Record Numbers	Vehicle ID numbers	Any other unique ID
Phone Numbers	Health Plan Numbers	Web URLs	
Fax Numbers	Account Numbers	IP Address Numbers	

Text Outline of Decision Tree

Top of chart begins Q: " Will you use (e.g.: access or collect) **patient health information** for research purposes?"

1. If "No" to using health information, then **"Research activity is not covered by HIPAA."**
2. If "Yes", then Q: " When obtaining the health information, will you have access to any of **the 18 HIPAA identifiers?** (see table below)?"
 1. If "No" to having access to identifiers, then **"Research activity is not covered by HIPAA."**
 2. If "Yes", then Q: "Is the health information **associated with the provision of care and/or payment for care** 1) with a covered component of the VCU Affiliated Covered Entity (ACE)? (see table at right) OR 2) by another HIPAA covered entity?"
 1. If "No" to health information associated with VCU ACE or another HIPAA covered entity, then **"Research activity is not covered by HIPAA."**
 2. If "Yes", then **"Research activity is covered by HIPAA regulations.** See Decision Tree 2 to determine appropriate pathway to access PHI."

Table of VCU ACE Components

- VCU Health & all satellite clinics
- College of Health Professions
- School of Dentistry
- School of Medicine
- School of Nursing
- School of Pharmacy
- VCU Employee Health
- VCU Telecommunications
- VCU Police
- VCU Audit & Compliance Services
- VCU Office of the General Counsel
- VCU Office of the VP for Research & Innovation